

Model:

S30U

Erba Kälte
GmbH

DATA

General Data

Type	Hermetic Reciprocating
Technology Type	On-Off
Displacement	3,00 cm ³
Compressor Cooling	Static
Expansion Device	Capillary Tube or Expansion Valve
Approval	CE
Power Supply	220-240 V /50-60Hz
Evaporating Temperature Range	-40 °C to 0 °C
Refrigerant	R 290

Electrical Data

Motor type	CSIR
Starting Torque	HST
Start Winding Resistance	25 °C : 11.5 Ω ± 10 %
Run Winding Resistance	25 °C : 29.7 Ω ± 10 %
Locked Rotor Current (LRC)	5,5 A

Mechanical Data

Oil Charge	130 ml
Oil Type Configuration	ESTER
Oil Type Viscosity	ISO32
Weight	4,6 Kg

Electrical Components

	Description
Motor Protection	GQR30U/DRB16R61A2
Starting Device	QP2-15
Start Capacitor	60uF

External Characteristics

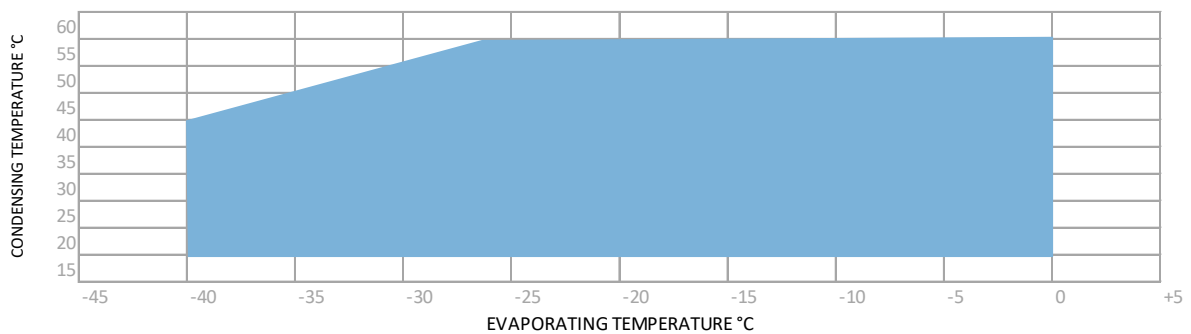
Tray Holder	No
Connector	Internal Diameter
Suction	6,2 mm ±0,1
Discharge	5,1 mm ±0,1
Process	6,2 mm ±0,1

PERFORMANCE

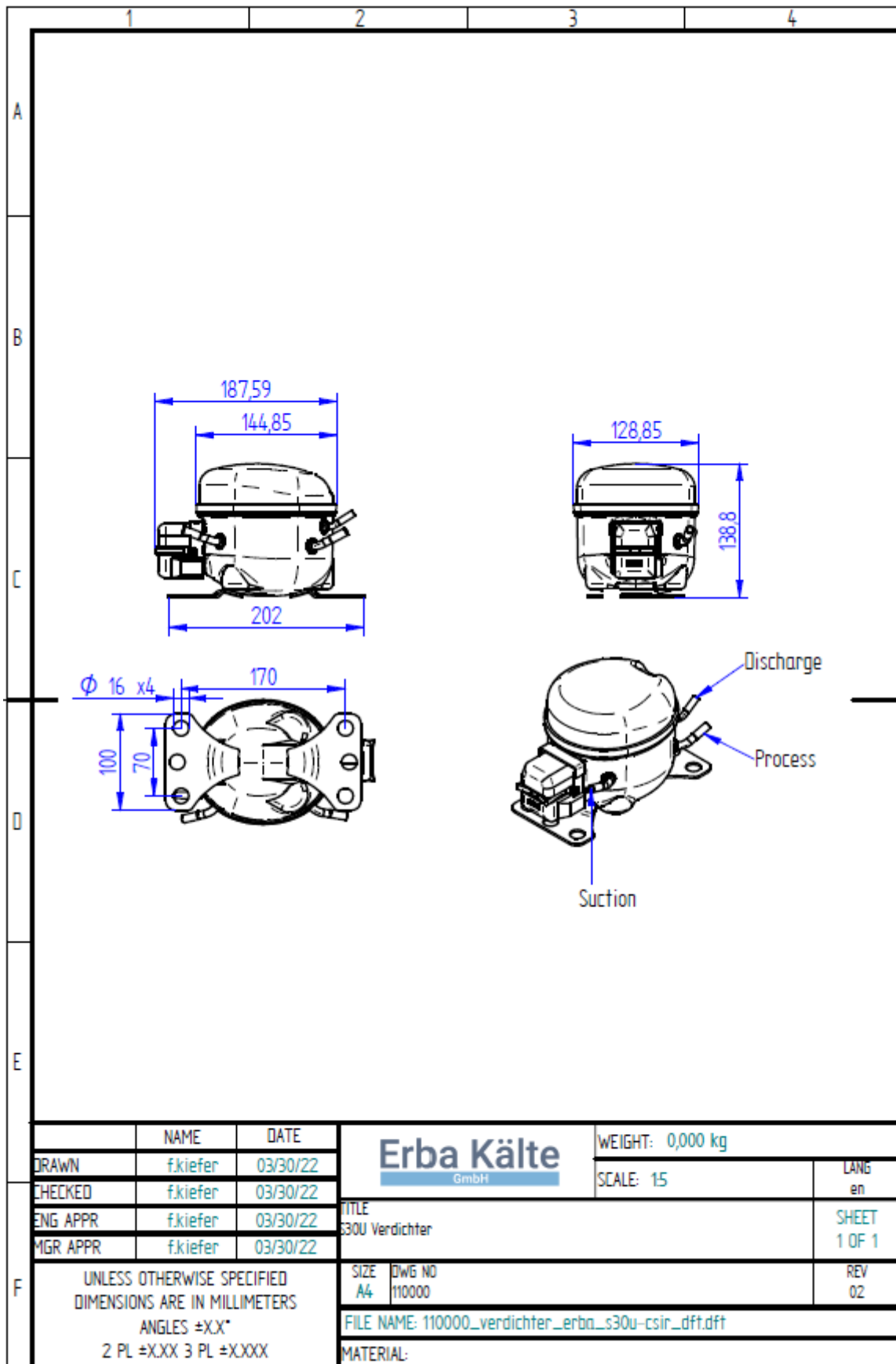
Performance Curve Data ASHRAE

Cooling Capacity ASHRAE +55°C												
-40°C	-35°C	-30°C	-25°C	Test Conditions: -23,3°C				-20°C	-15°C	-10°C	-5°C	0°C
W	W	W	W	Capacity (W)	Input Power (W)	Current (A)	COP (W/W)	W	W	W	W	W
33	65	97	123	80	101	0,7	1,30	158	185	235	299	379

Operating Envelope



External Dimensions



Electrical Connection Picture

