

Model:

N70U

Erba Kälte
GmbH

DATA

General Data

Type	Hermetic reciprating
Technology Type	On-Off
Displacement	7,00 cm ³
Compressor Cooling	Fan
Expansion Device	Capillary Tube or Expansion Valve
Approval	CE
Power Supply	220-240 V/ 50-60 Hz
Evaporating Temperature Range	-40 °C to 0 °C
Refrigerant	R 290

Electrical Data

Motor type	CSIR
Starting Torque	HST
Start Winding Resistance	25 °C: 12.0 Ω ± 10%
Run Winding Resistance	25 °C: 11.5 Ω ± 10%
Locked Rotor Current (LRC)	8,0 A

Mechanical Data

Oil Charge	180 ml
Oil Type Configuration	ESTER
Oil Type Viscosity	ISO32
Weight	7,8 Kg

Electrical Components

	Description
Motor Protection	GQR70U/DRB25P61A1
Starting Device	QP2-15
Start Capacitor	60uF

External Characteristics

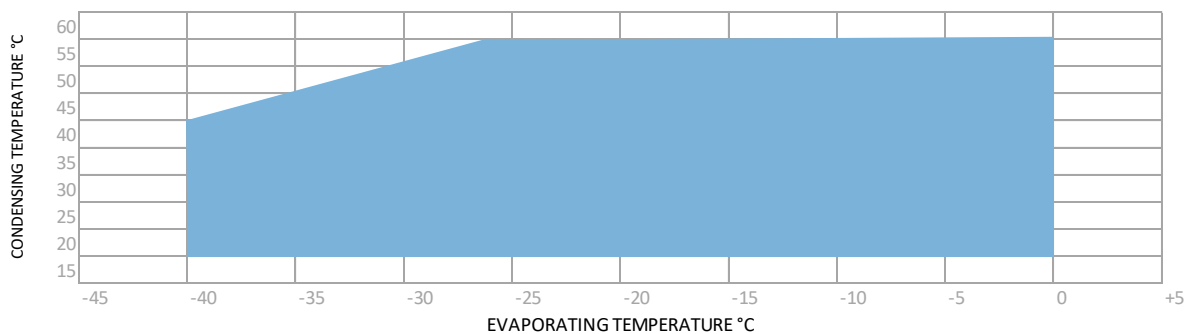
Tray Holder	No
Connector	Internal Diameter
Suction	6,2 mm ±0,1
Discharge	5,1 mm ±0,1
Process	6,2 mm ±0,1

PERFORMANCE

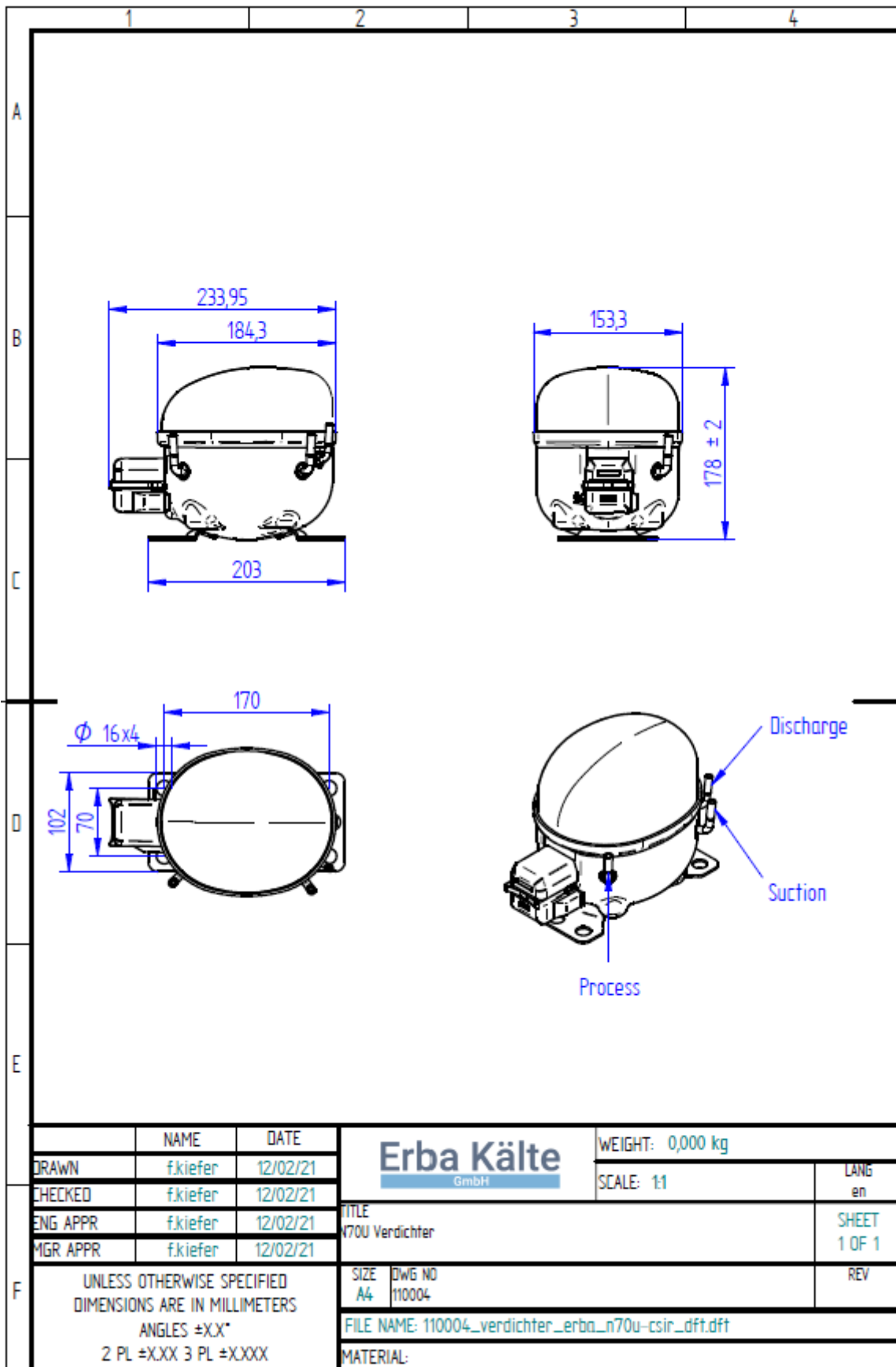
Performance Curve Data ASHRAE

Cooling Capacity ASHRAE +55°C												
-40°C	-35°C	-30°C	-25°C	Test Conditions: -23,3°C				-20°C	-15°C	-10°C	-5°C	0°C
W	W	W	W	Capacity (W)	Input Power (W)	Current (A)	COP (W/W)	W	W	W	W	W
154	197	265	327	320	256	1,4	1,45	399	482	575	686	818

Operating Envelope



External Dimensions



Electrical Connection Picture

