

Model:

# ER-UT90U

**Erba Kälte**  
GmbH

## DATA

### General Data

<b>Weight</b>	14,5 Kg
<b>Height</b>	279,35 mm
<b>Length</b>	430,00 mm
<b>Width</b>	339,50 mm
<b>Expansion Device</b>	Capillary Tube or Expansion Valve
<b>Approval</b>	CE
<b>Power Supply</b>	220-240 V /50-60 Hz
<b>Evaporating Temperature Range</b>	-40 °C to 0 °C
<b>Refrigerant</b>	R 290

### Electrical Data

<b>Motor type</b>	CSIR
<b>Starting Torque</b>	HST
<b>Start Winding Resistance</b>	25 °C : $18.7\Omega \pm 10\%$
<b>Run Winding Resistance</b>	25 °C : $7.7\Omega \pm 10\%$
<b>Locked Rotor Current (LRC)</b>	12,8 A

### Fan Motor

<b>Number</b>	1
<b>Shaft Power</b>	32W
<b>Blade Diameter</b>	230 mm

### Spare Parts

	Description
<b>Condenser</b>	605268
<b>Fan</b>	360071
<b>Motor</b>	352145
<b>Compressor</b>	110006
<b>Pressostat</b>	731067

## External Characteristics

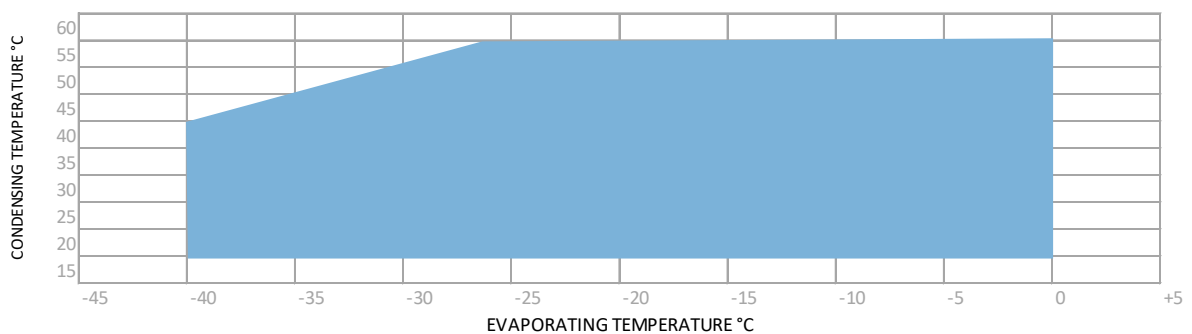
<b>Tray Holder</b>	No
<b>Connector</b>	Internal Diameter
<b>Suction</b>	6,2 mm ±0,1
<b>Discharge</b>	6,2 mm ±0,1
<b>Process</b>	6,2 mm ±0,1

## PERFORMANCE

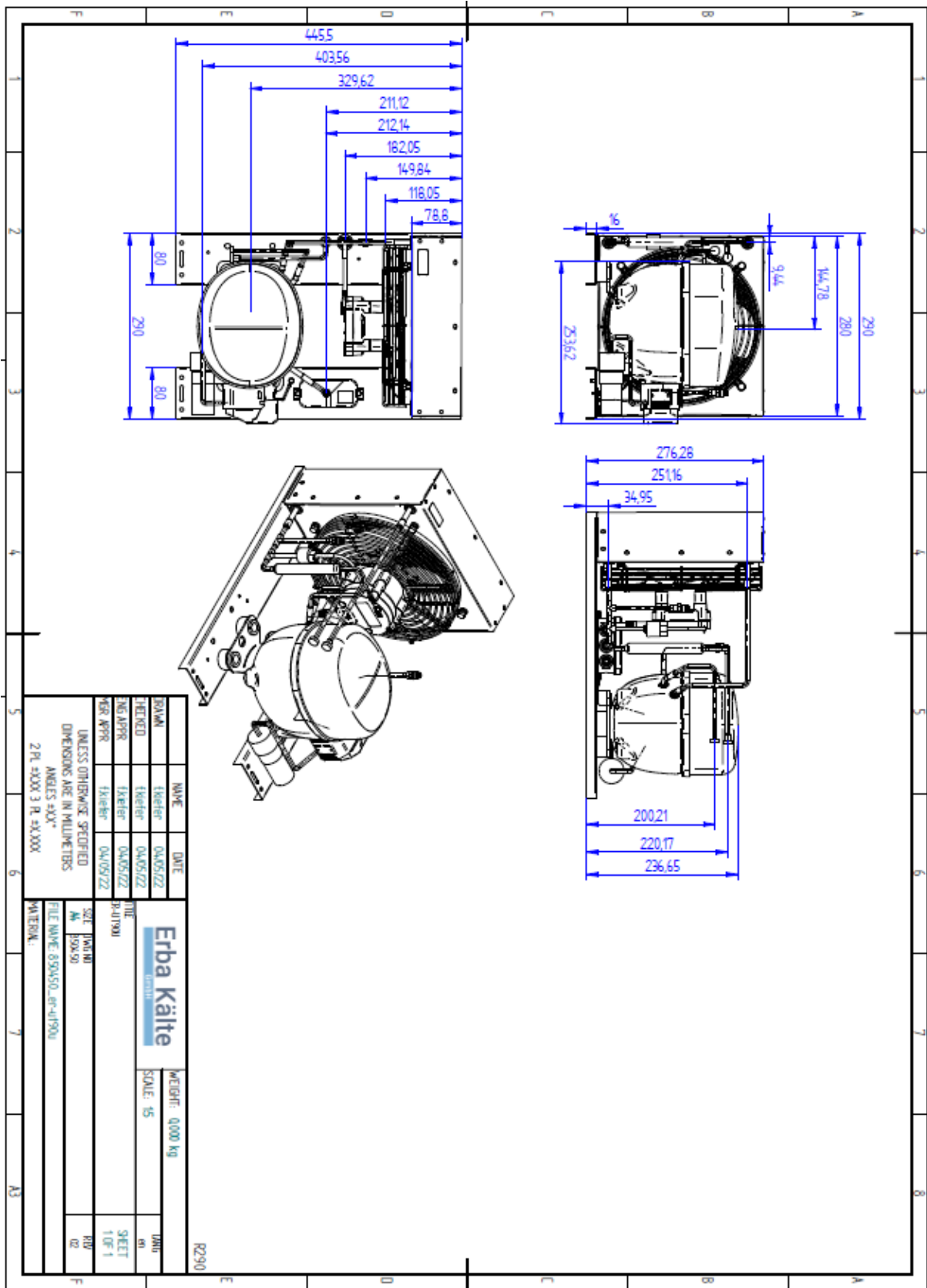
### Performance Curve Data EN12900

Cooling Capacity EN12900 +45°C									
Evaporating	-40°C	-35°C	-30°C	-25°C	-20°C	-15°C	-10°C	-5°C	0°C
<b>Capacity</b>	215 W	235 W	285 W	361 W	455 W	570 W	717 W	876 W	1045 W
<b>Input Power</b>	191 W	220 W	239 W	267 W	293 W	325 W	357 W	386 W	405 W
<b>Current</b>	1,68 A	1,75 A	1,80 A	1,87 A	1,96 A	2,07 A	2,18 A	2,29 A	2,34 A

### Operating Envelope



# External Dimensions



Electrical Connection Picture

