

Model:

ER-UT120U

Erba Kälte
GmbH

DATA

General Data

Weight	14,5 Kg
Height	270,00 mm
Length	430,00 mm
Width	339,50 mm
Expansion Device	Capillary Tube or Expansion Valve
Approval	CE
Power Supply	220-240 V /50-60 Hz
Evaporating Temperature Range	-40 °C to 0 °C
Refrigerant	R 290

Electrical Data

Motor type	CSIR
Starting Torque	HST
Start Winding Resistance	25 °C : 21.0 Ω ± 10 %
Run Winding Resistance	25 °C : 6.0 Ω ± 10 %
Locked Rotor Current (LRC)	15,0 A

Fan Motor

Number	1
Shaft Power	32W
Blade Diameter	230 mm

Spare Parts

	Description
Condenser	605268
Fan	360071
Motor	352145
Compressor	110006
Pressostat	731067

External Characteristics

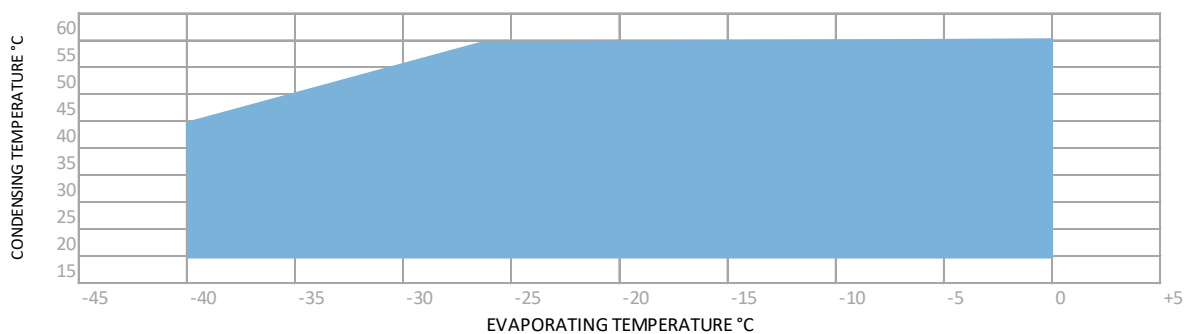
Tray Holder	No
Connector	Internal Diameter
Suction	6,2 mm ±0,1
Discharge	6,2 mm ±0,1
Process	6,2 mm ±0,1

PERFORMANCE

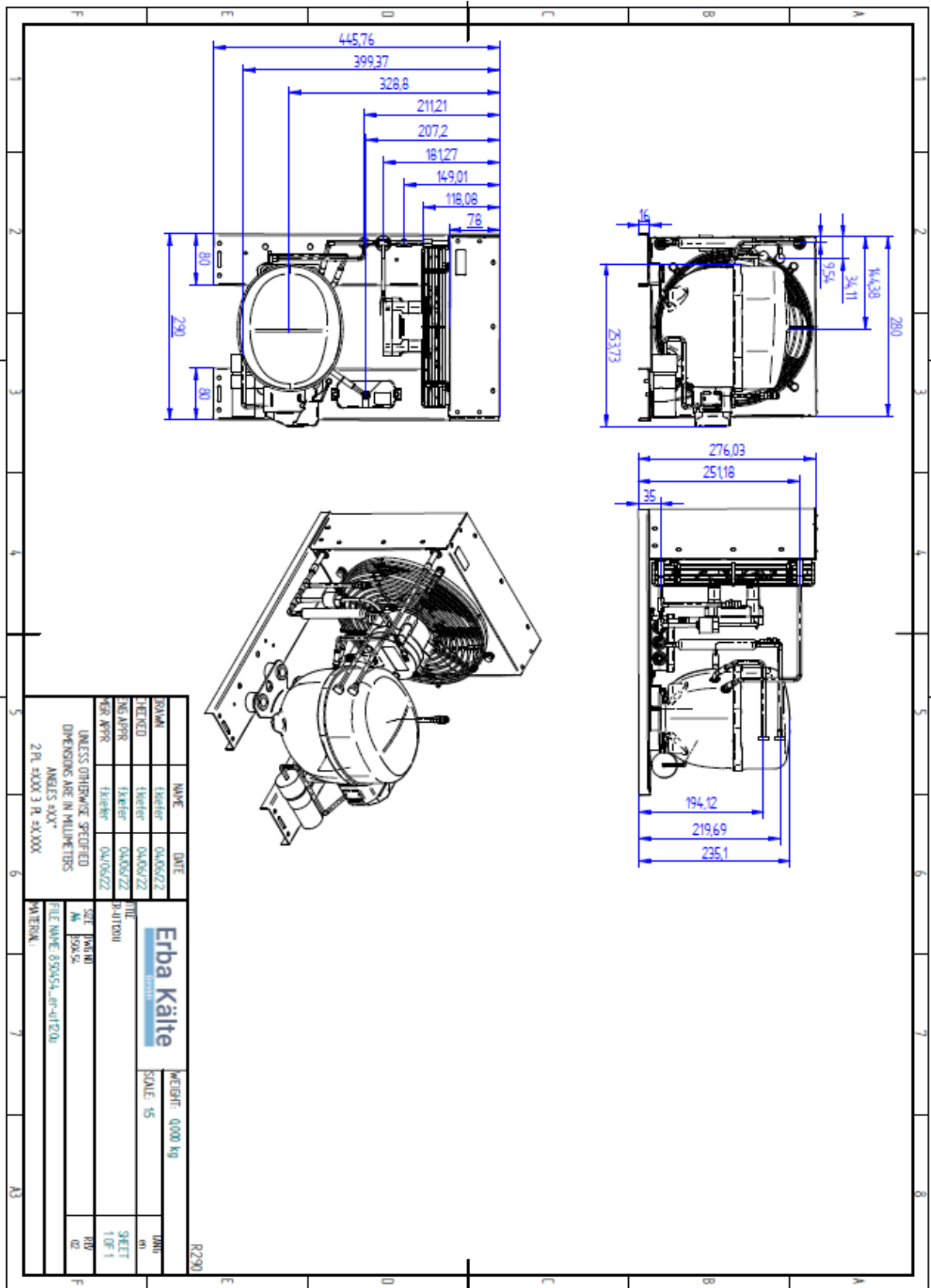
Performance Curve Data EN12900

Cooling Capacity EN12900 +45°C									
Evaporating	-40°C	-35°C	-30°C	-25°C	-20°C	-15°C	-10°C	-5°C	0°C
Capacity	259 W	296 W	374 W	495 W	604 W	782 W	953 W	1147 W	1362 W
Input Power	264 W	305 W	335 W	383 W	411 W	468 W	505 W	544 W	584 W
Current	2,33 A	2,41 A	2,48 A	2,61 A	2,70 A	2,88 A	3,03 A	3,17 A	3,33 A

Operating Envelope



External Dimensions



Electrical Connection Picture

