

Model:

ER-UE60U

Erba Kälte
GmbH

DATA

General Data

| | |
|--------------------------------------|-----------------------------------|
| Weight | 11,0 Kg |
| Height | 249,49 mm |
| Length | 430,00 mm |
| Width | 339,50 mm |
| Expansion Device | Capillary Tube or Expansion Valve |
| Approval | CE |
| Power Supply | 220-240 V /50-60 Hz |
| Evaporating Temperature Range | -40 °C to 0 °C |
| Refrigerant | R 290 |

Electrical Data

| | |
|-----------------------------------|-----------------------|
| Motor type | CSIR |
| Starting Torque | HST |
| Start Winding Resistance | 25 °C : 20.8 Ω ± 10 % |
| Run Winding Resistance | 25 °C : 12.5 Ω ± 10% |
| Locked Rotor Current (LRC) | 7,5 A |

Fan Motor

| | |
|-----------------------|--------|
| Number | 1 |
| Shaft Power | 32W |
| Blade Diameter | 200 mm |

Spare Parts

| | Description |
|-------------------|-------------|
| Condenser | 605255 |
| Fan | 360070 |
| Motor | 352145 |
| Compressor | 110003 |
| Pressostat | 731067 |

External Characteristics

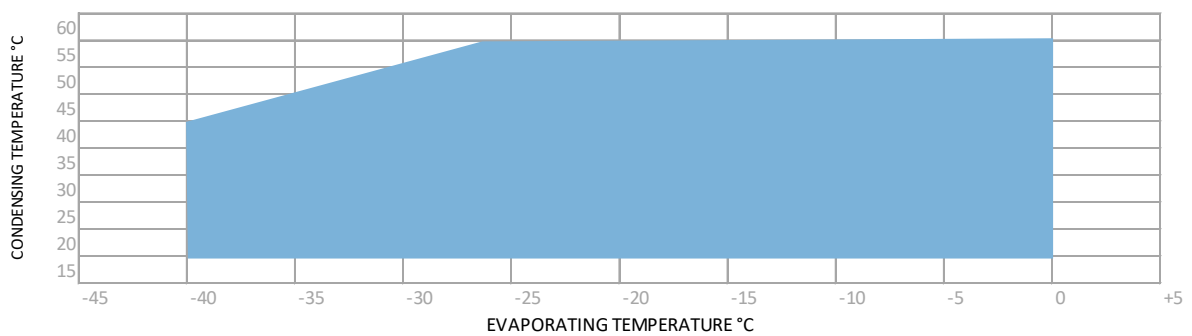
| | |
|--------------------|-------------------|
| Tray Holder | No |
| Connector | Internal Diameter |
| Suction | 6,2 mm ±0,1 |
| Liquid | 5,4 mm ±0,1 |
| Process | 6,2 mm ±0,1 |

PERFORMANCE

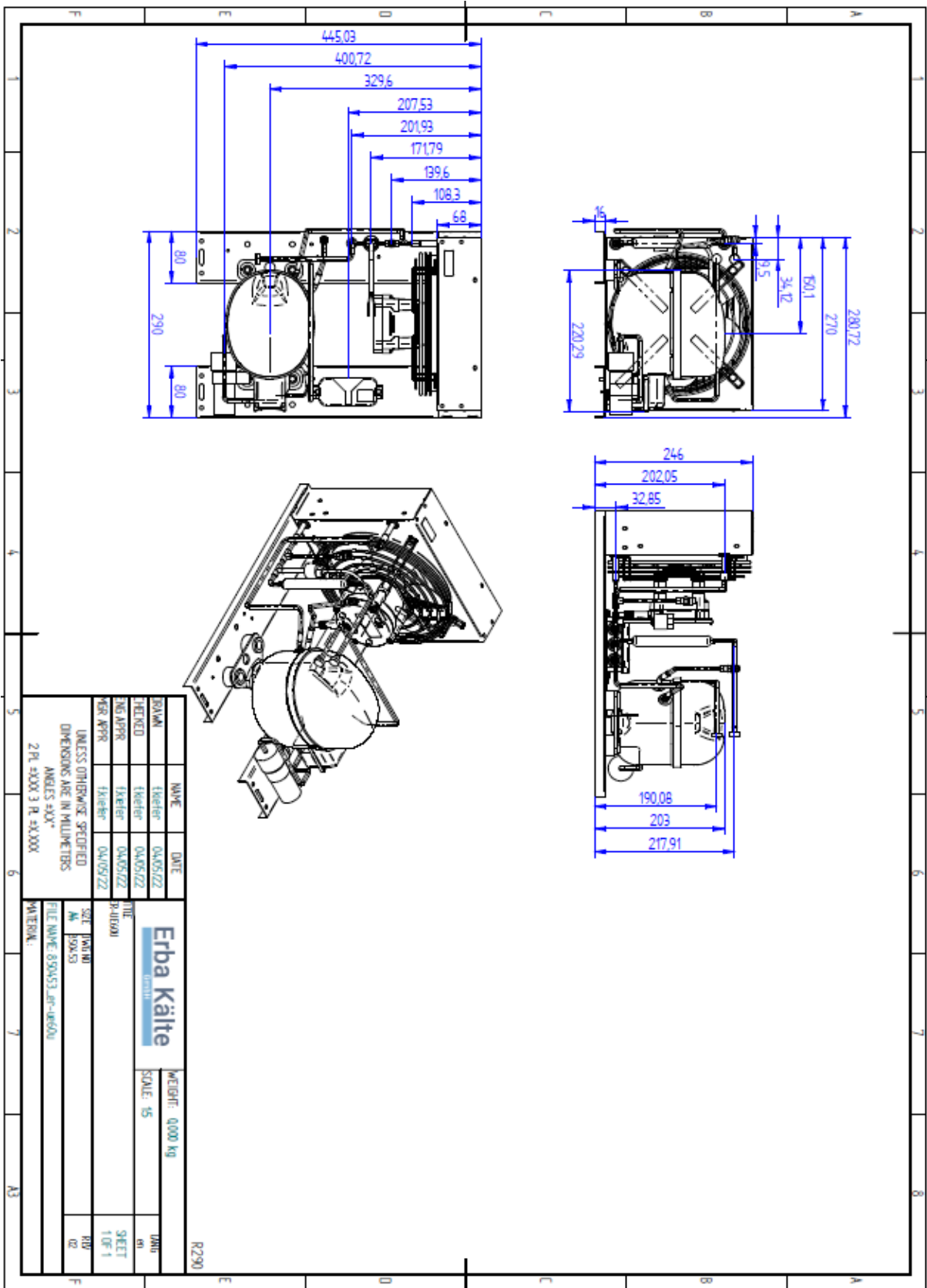
Performance Curve Data EN12900

| Cooling Capacity EN12900 +45°C | | | | | | | | | |
|--------------------------------|--------|--------|--------|--------|--------|--------|--------|--------|--------|
| Evaporating | -40°C | -35°C | -30°C | -25°C | -20°C | -15°C | -10°C | -5°C | 0°C |
| Capacity | 121 W | 140 W | 181 W | 227 W | 281 W | 348 W | 421 W | 505 W | 624 W |
| Input Power | 125 W | 147 W | 164 W | 180 W | 197 W | 213 W | 228 W | 242 W | 259 W |
| Current | 1,05 A | 1,10 A | 1,14 A | 1,19 A | 1,25 A | 1,30 A | 1,36 A | 1,41 A | 1,47 A |

Operating Envelope



External Dimensions



Electrical Connection Picture

