

Model:

ER-UE45U

Erba Kälte
GmbH

DATA

General Data

Weight	10,2 Kg
Height	233,55 mm
Length	360,00 mm
Width	290,00 mm
Expansion Device	Capillary Tube or Expansion Valve
Approval	CE
Power Supply	220-240 V /50-60 Hz
Evaporating Temperature Range	-40 °C to 0 °C
Refrigerant	R 290

Electrical Data

Motor type	CSIR
Starting Torque	HST
Start Winding Resistance	25 °C : 20.5 Ω ± 10 %
Run Winding Resistance	25 °C : 18.5 Ω ± 10 %
Locked Rotor Current (LRC)	6,0 A

Fan Motor

Number	1
Shaft Power	13W
Blade Diameter	172 mm

Spare Parts

	Description
Condenser	605254
Fan	360069
Motor	352145
Compressor	110001
Pressostat	731067

External Characteristics

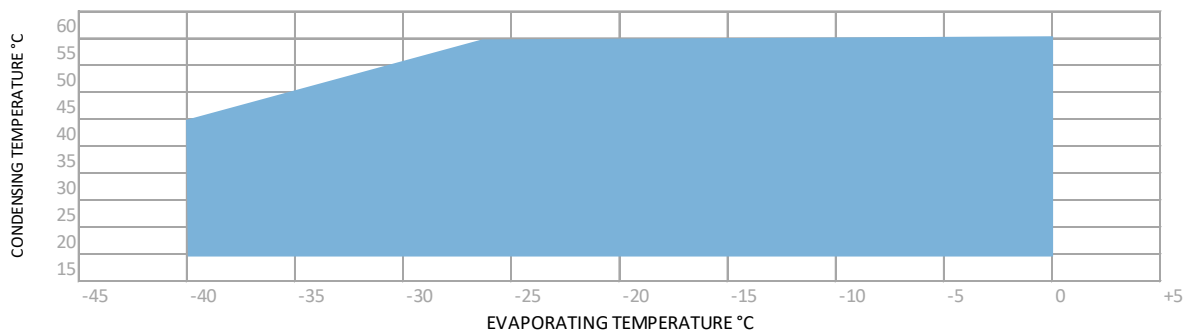
Tray Holder	No
Connector	Internal Diameter
Suction	6,2 mm \pm 0,1
Liquid	5,4 mm \pm 0,1
Process	6,2 mm \pm 0,1

PERFORMANCE

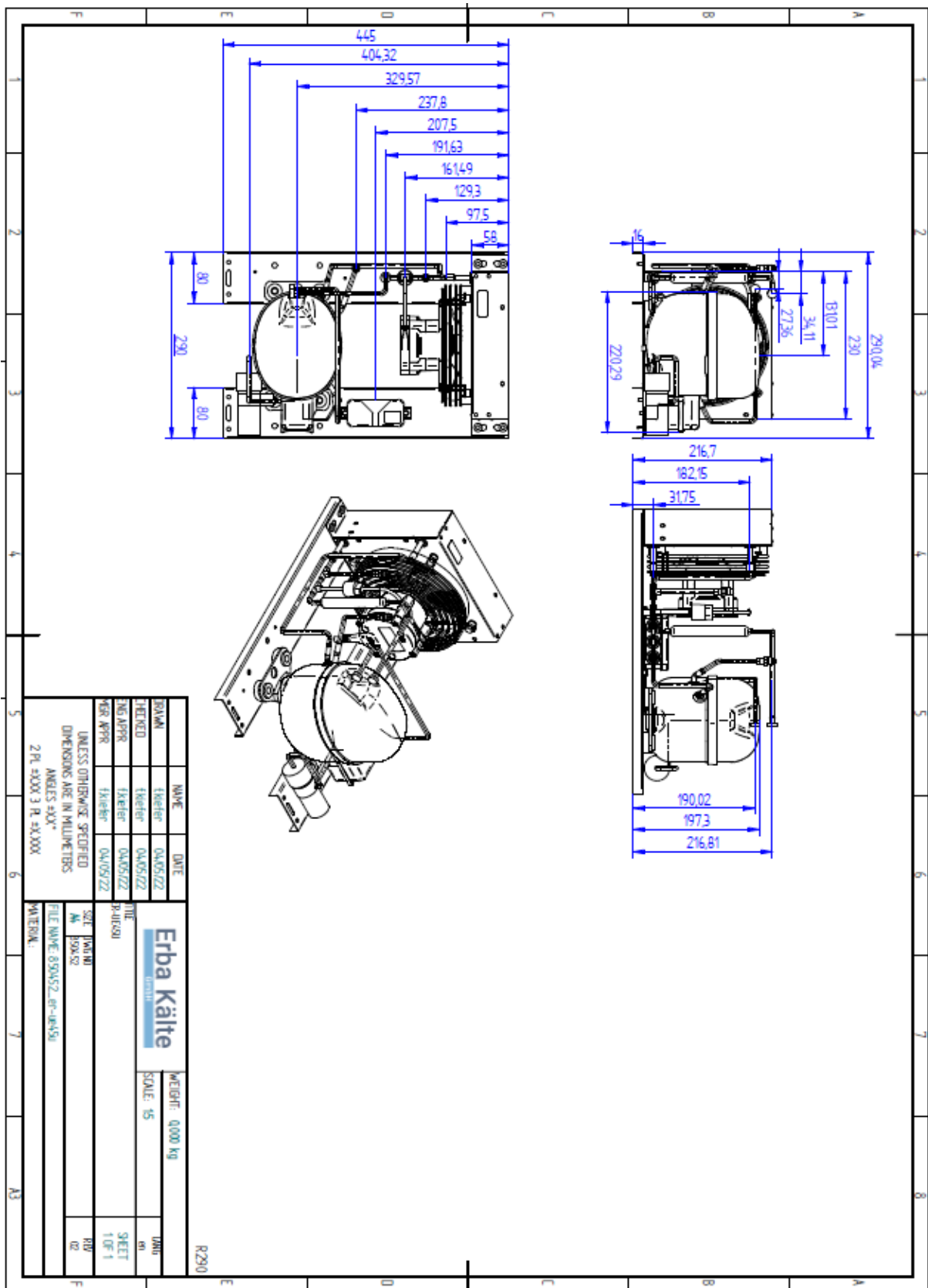
Performance Curve Data EN12900

Cooling Capacity EN12900 +45°C									
Evaporating	-40°C	-35°C	-30°C	-25°C	-20°C	-15°C	-10°C	-5°C	0°C
Capacity	69 W	91 W	123 W	156 W	195 W	251W	305 W	367 W	440 W
Input Power	94 W	110 W	122 W	134 W	146 W	159 W	168 W	173 W	180 W
Current	0,91 A	0,93 A	0,96 A	0,99 A	1,02 A	1,06 A	1,08 A	1,1 A	1,13 A

Operating Envelope



External Dimensions



Electrical Connection Picture

