

Model:

E55U

Erba Kälte
GmbH

DATA

General Data

Type	Hermetic Reciprocating
Technology Type	On-Off
Displacement	5,50 cm ³
Compressor Cooling	Static
Expansion Device	Capillary Tube or Expansion Valve
Approval	CE, CCC, CB
Power Supply	220-240 V / 50-60 Hz
Evaporating Temperature Range	-40 °C to 0 °C
Refrigerant	R 290

Electrical Data

Motor type	CSIR
Starting Torque	HST
Start Winding Resistance	25 °C: 18.6 Ω ± 10 %
Run Winding Resistance	25 °C: 14.6 Ω ± 10 %
Locked Rotor Current (LRC)	7,5 A

Mechanical Data

Oil Charge	180 ml
Oil Type Configuration	ESTER
Oil Type Viscosity	ISO32
Weight	6,8 Kg

Electrical Components

	Description
Motor Protection	GQR55U/DRB25P61A1
Starting Device	QP2-15
Start Capacitor	60uF

External Characteristics

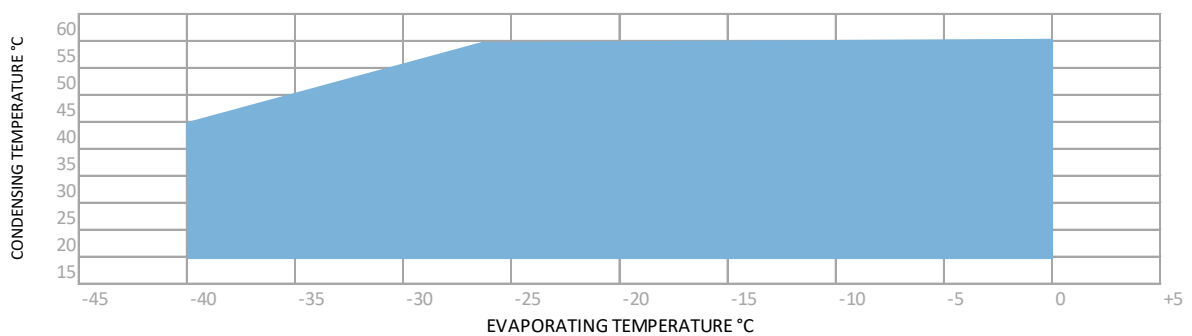
Tray Holder	No
Connector	Internal Diameter
Suction	6,2 mm ±0,1
Discharge	5,1 mm ±0,1
Process	6,2 mm ±0,1

PERFORMANCE

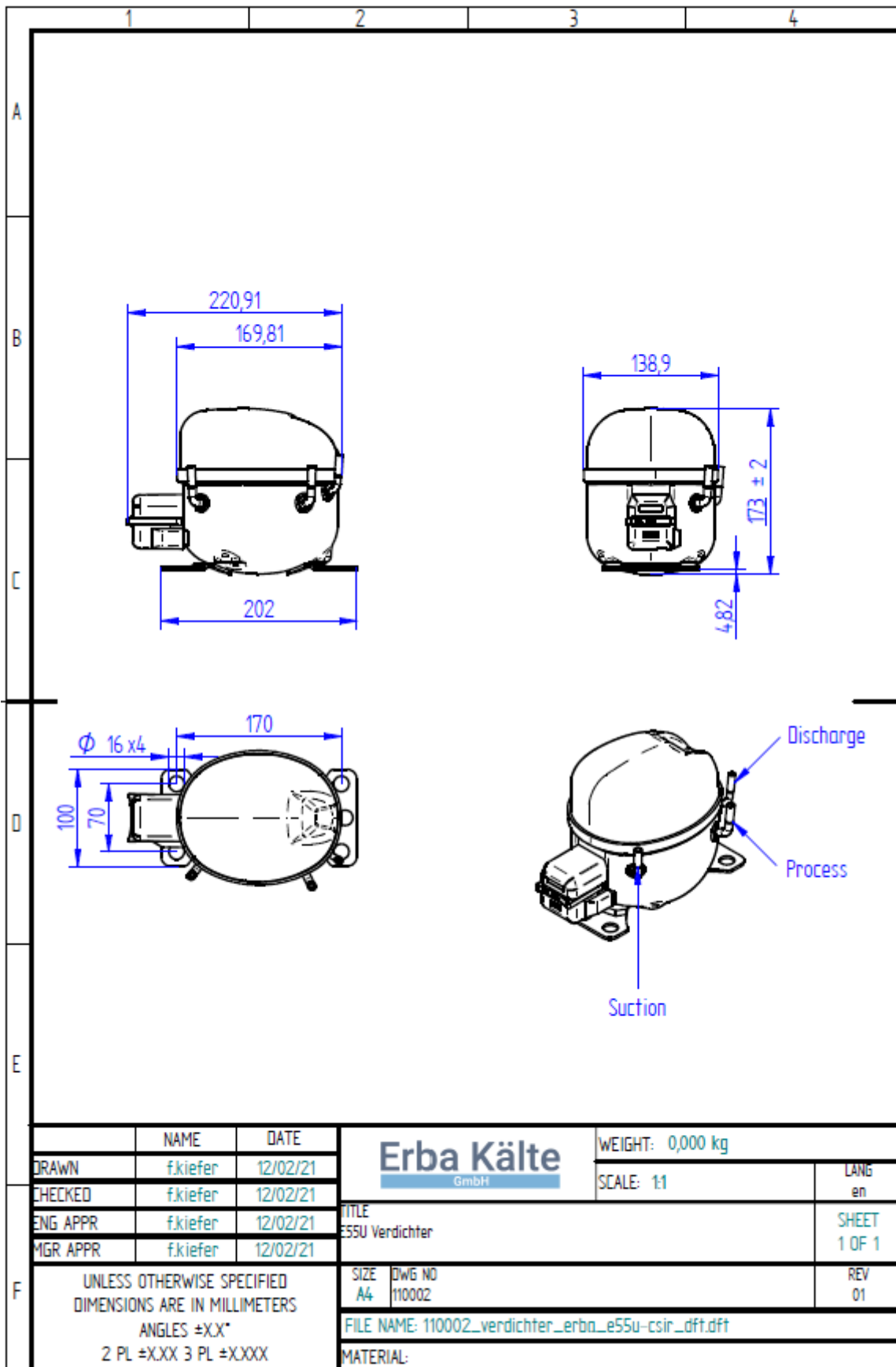
Performance Curve Data ASHRAE

Cooling Capacity ASHRAE +55°C												
-40°C	-35°C	-30°C	-25°C	Test Conditions: -23,3°C				-20°C	-15°C	-10°C	-5°C	0°C
W	W	W	W	Capacity (W)	Input Power (W)	Current (A)	COP (W/W)	W	W	W	W	W
110	145	188	238	230	183	1,2	1,45	297	364	440	532	643

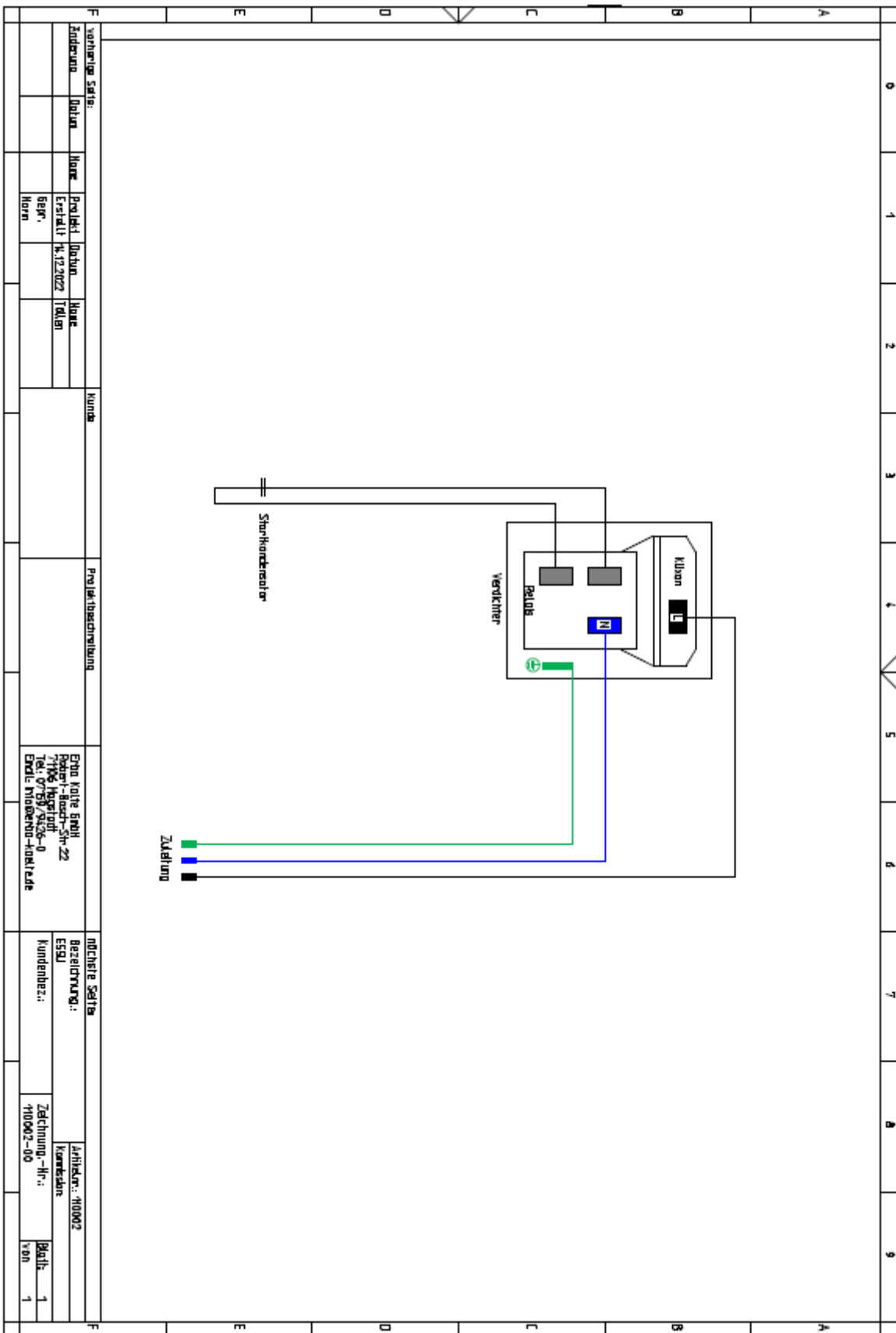
Operating Envelope



External Dimensions



Electrical Connection Picture



vorherige Seite:		Kunde		Projektüberschrift		ECHO Karte ECH		nechere Seite	
Zustellung	Datum	Name	Projekt	Datum	Name	Rechnungsbereich	Rechnungs-Nr.	Bezeichnung:	Arbeits-Nr.
			Erstellt	10.01.2022	T.OLBI	71106	110002-00	Kundenbez.:	110002-00
		Herrn				Erstelle	110002-00	Zeichnung-Nr.:	110002-00
									Blatt
									von
									1