

Model:

E45U

Erba Kälte
GmbH

DATA

General Data

Type	Hermetic Reciprocating
Technology Type	On-Off
Displacement	4,50 cm ³
Compressor Cooling	Static
Expansion Device	Capillary Tube or Expansion Valve
Approval	CE, CCC, CB
Power Supply	220-240 V / 50-60 Hz
Evaporating Temperature Range	-40 °C to 0 °C
Refrigerant	R 290

Electrical Data

Motor type	CSIR
Starting Torque	HST
Start Winding Resistance	25 °C: 20.5 Ω ± 10 %
Run Winding Resistance	25 °C: 18.5 Ω ± 10 %
Locked Rotor Current (LRC)	6,0 A

Mechanical Data

Oil Charge	180 ml
Oil Type Configuration	ESTER
Oil Type Viscosity	ISO32
Weight	6,7 Kg

Electrical Components

	Description
Motor Protection	GQR45U/DRB25P61A1
Starting Device	QP2-15
Start Capacitor	60uF

External Characteristics

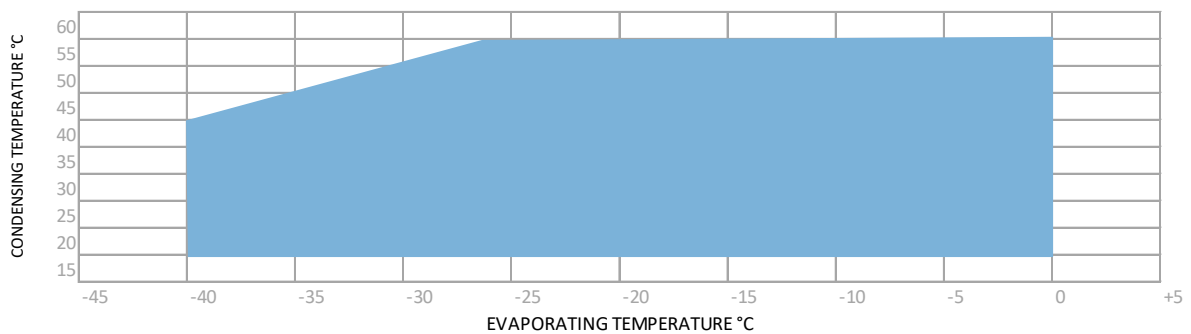
Tray Holder	No
Connector	Internal Diameter
Suction	6,2 mm ±0,1
Discharge	5,1 mm ±0,1
Process	6,2 mm ±0,1

PERFORMANCE

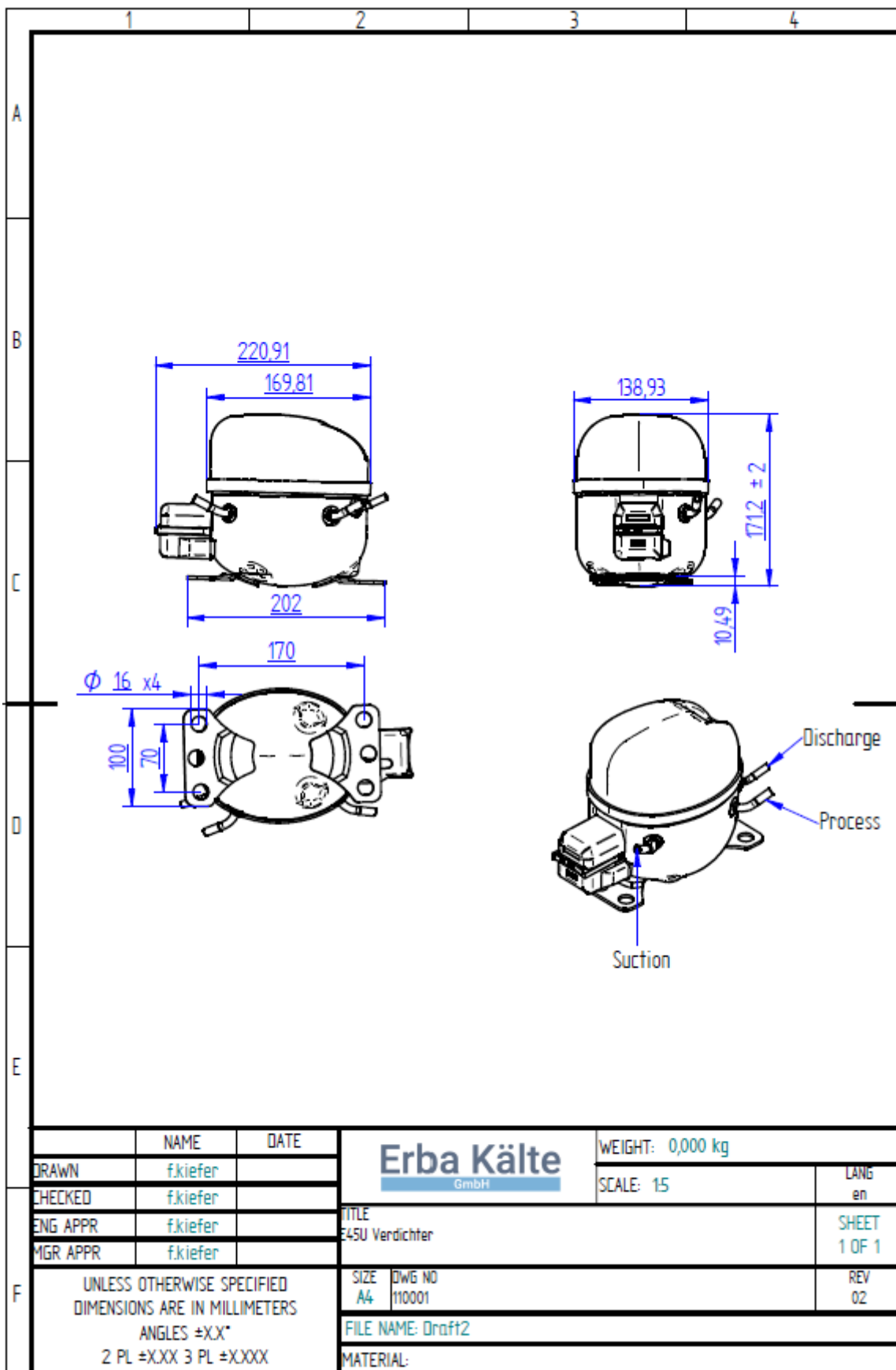
Performance Curve Data ASHRAE

Cooling Capacity ASHRAE +55°C												
-40°C	-35°C	-30°C	-25°C	Test Conditions: -23,3°C				-20°C	-15°C	-10°C	-5°C	0°C
W	W	W	W	Capacity (W)	Input Power (W)	Current (A)	COP (W/W)	W	W	W	W	W
85	112	145	184	208	143	0,9	1,45	230	283	345	421	513

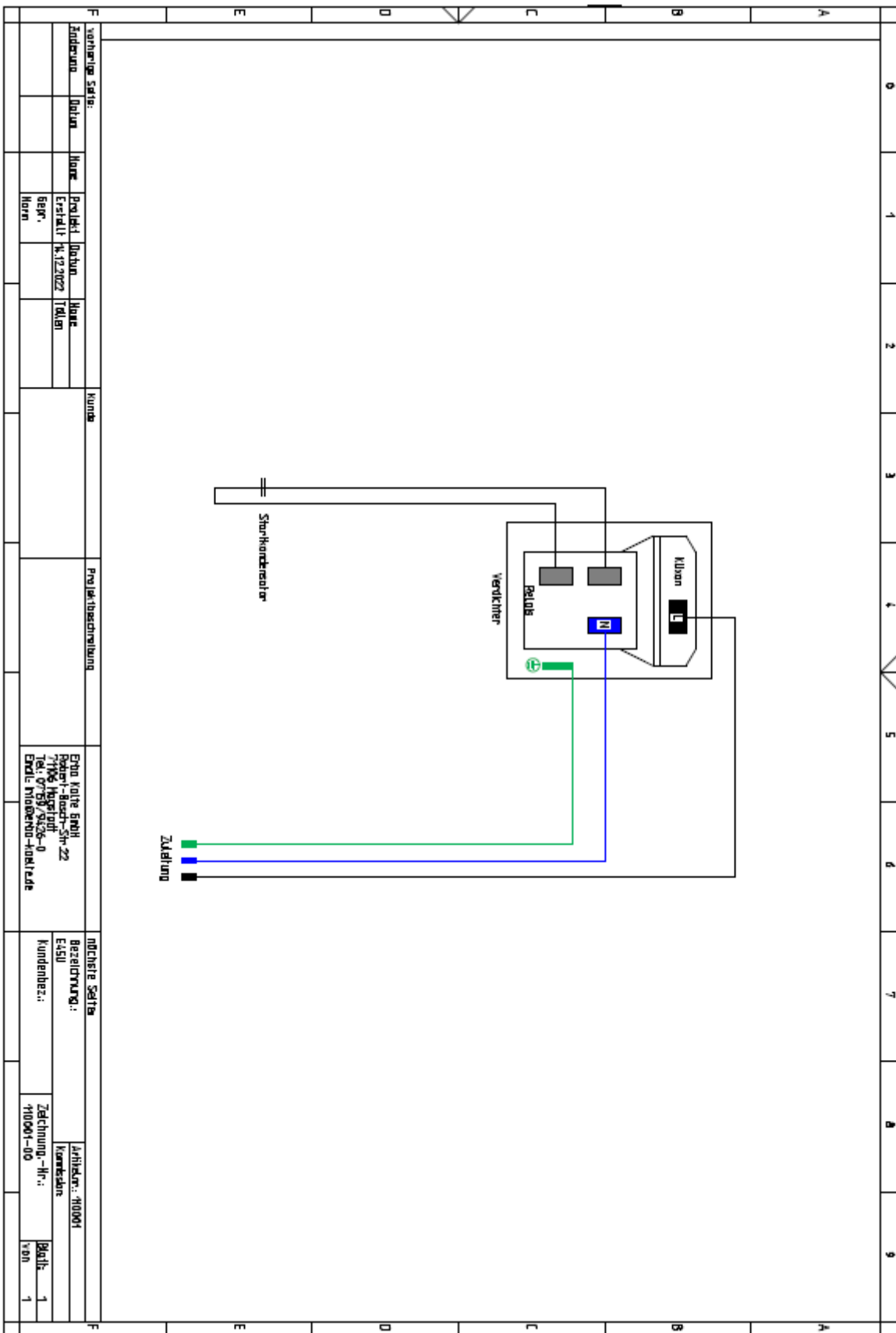
Operating Envelope



External Dimensions



Electrical Connection Picture



vorherige Seite:		Kunde		Projektbeschreibung		ECHO-Karte ECH-71106		MOCHERIE Seite	
Zustellung	Datum	Name	Projekt	Ordnung	Name	Erstellung	Rev. Nr.	Bezeichnung:	4450
			11/21/22			11/21/22	0	Kundenbez.:	110001-00
								Zeichnung-Nr.:	110001-00
								Arbeitsnr.:	110001
								Komplexion	
								Blatt	1
								von	1